

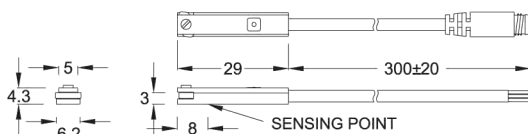
KT-40 SERIES



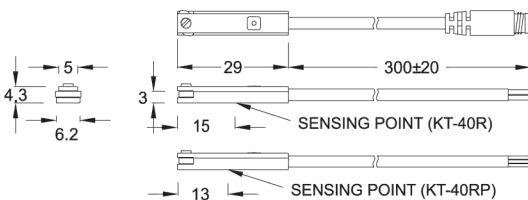
Magnetic switch

■ DIMENSION

KT-40N, KT-40P / KT-40N-QD, KT-40P-QD



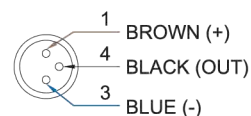
KT-40R, KT-40RP / KT-40R-QD, KT-40RP-QD



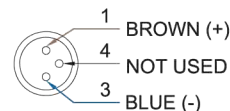
Unit:mm

■ QD PINOUT

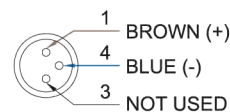
*3 wire QD wiring



*2 wire QD wiring



*2 wire EQD wiring



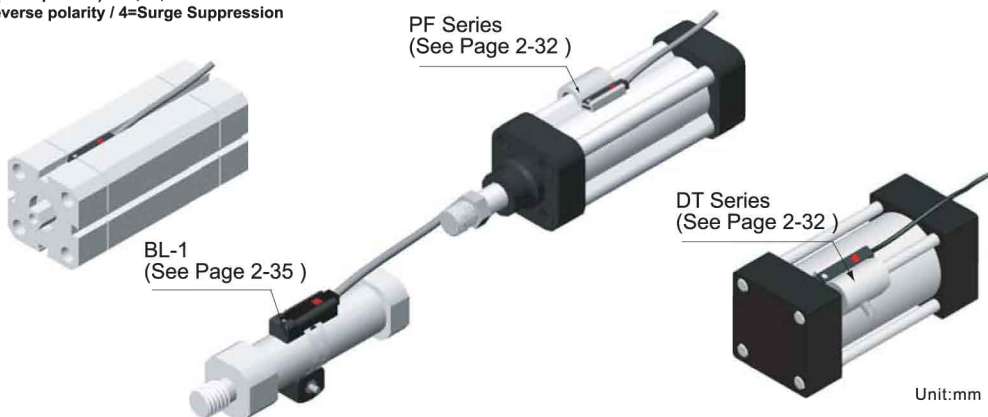
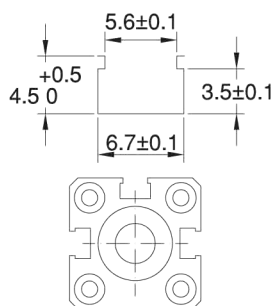
■ SPECIFICATION

TYPE	KT-40R	KT-40N	KT-40P	KT-40RP
CONNECT DIAGRAM				
CHARACTERISTICS				
WIRING METHOD	2-Wire Type	3-Wire Type		
SWITCHING LOGIC	SPST, Normally Open	Solid State Output, Normally Open		SPST, Normally Open
SENSOR TYPE	Reed Switch	NPN Current Sinking	PNP Current Sourcing	Reed Switch
OPERATING VOLTAGE	5~120V DC/AC	10~30V DC		10~30V DC/AC
SWITCHING CURRENT	100 mA max.			500 mA. max.
CONTACT RATING (NOTE 1)	10 W max.	3 W max.		10 W max.
CURRENT CONSUMPTION	--	8 mA @ 24V DC max.		10 mA @ 24V DC max.
VOLTAGE DROP	3.5 V max.	1.5 V max.		0.1 V @ 100mA max.
LEAKAGE CURRENT	--	0.01 mA max.		--
INDICATOR	Red LED		Yellow LED	
CABLE	ø3, 2C, PUR	ø3, 3C, PUR		
OPERATING FREQUENCY	200 Hz	1000 Hz		200 Hz
MAGNET REQUIREMENT (NOTE 2)	50 Gauss	45 Gauss		
TEMPERATURE RANGE	-10~70°C			
SHOCK (NOTE 3)	30 G	50 G		30 G
VIBRATION (NOTE 4)	9 G			
ENCLOSURE CLASSIFICATION	IEC 529 IP 67			
PROTECTION CIRCUIT (NOTE 5)	1	2,3,4		1

NOTE:

1. WARNING: Never exceed rating (Watt=Voltage x Amperage). Permanent damage to sensor will occur.
2. Measuring standard target: ø15.5Xø8X5t (Anisotropy rubber magnet)
3. Sin wave / X, Y, Z 3 directions / 3 times each direction / 11 ms each time.
4. Double amplitude 1.5 mm / 10Hz~55Hz~10Hz (Sweep 1 min) / X, Y, Z 3 directions / 1 hour each time.
5. 1=None / 2=Short-circuit / 3=Power Source Reverse polarity / 4=Surge Suppression

■ GROOVE DIMENSION



Unit:mm